

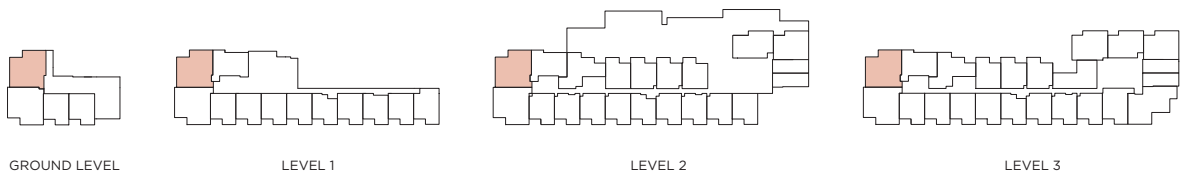
Sydney

PLAN P

RENTALS

3 BED | 2 BATH

INDOOR LIVING: 862 - 871 SQ. FT.
OUTDOOR LIVING: 115 - 352 SQ. FT.
TOTAL: 977 - 1223 SQ. FT.



Dimensions, sizes, specifications, plan orientation and materials are approximate only. All patio, terrace and balcony sizes may vary. Windows, columns, privacy screens, demising walls, spandrel and guardrail details may vary from home to home. The quality of homes at Sydney are built by LM Sydney Homes Limited Partnership. E & O.E.